



Admiral 32m "Tropicana" - 2004/2014

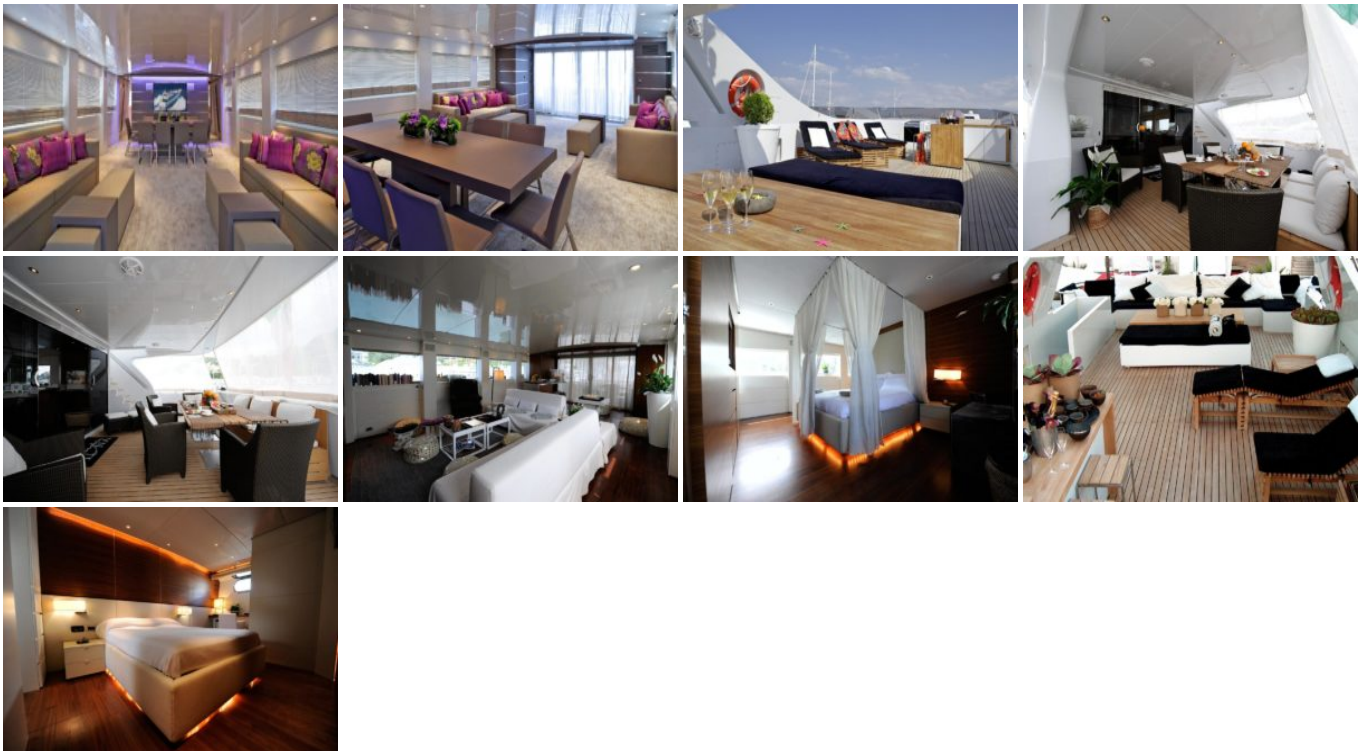
Boat ID: 4687

Date: August 11, 2020

TROPICANA boasts ample interior and exterior living areas. The interior is bright and airy, featuring plenty of natural light, crisp white finishes and soothing woods throughout. The salon is open plan and inviting. Further forward, the Master stateroom is full beam of the yacht, with a King size bed and large en-suite facilities. Below decks, a VIP cabin, Double cabin and 2 Twin cabins, easily accommodate 8 more guests, all with private en-suite facilities. Exterior living aboard the TROPICANA motor yacht is generous. The aft deck is directly adjacent to the salon through wide sliding glass doors, ideal for entertaining and socializing, with an alfresco dining option. Beyond the aft deck, the transom features an extended swim platform and water toys garage, perfect for all the water enthusiasts. Above the main deck, guests can sit back on one of the chaise lounges or sunpad, dine alfresco and enjoy the yacht's impressive speeds underway.

M/Y TROPICANA cruises effortlessly at 22 knots, reaching top speeds of 29 knots, on her planing aluminum hull.

Gallery



Specifications & Accommodation

	CATEGORY	ITEM
✓	Brand	Admiral
✓	Model	32
✓	Boat type	Motor Yacht
✓	Construction year	2004
✓	LOA Length	30 - 40m
✓	Cruise speed	22 knots/hr
✓	Average fuel consumption	660 ltrs/hr
✓	Passengers	10-12
✓	Beam	7,10m
✓	Fuel tank capacity	21500 L
✓	Cabins	5
✓	VAT	Paid
✓	Engine power	2 x MTU 12V396 TE94

Equipment

	ITEM
✓	Tender 3.85m Oceanic with Yamaha 40hp
✓	2 x deep freezers
✓	2 x icemakers
✓	Winecooler
✓	Bow Thruster
✓	Watermaker 280 l/h

	ITEM
✓	Air-condition Frigit
✓	2 x Generators