



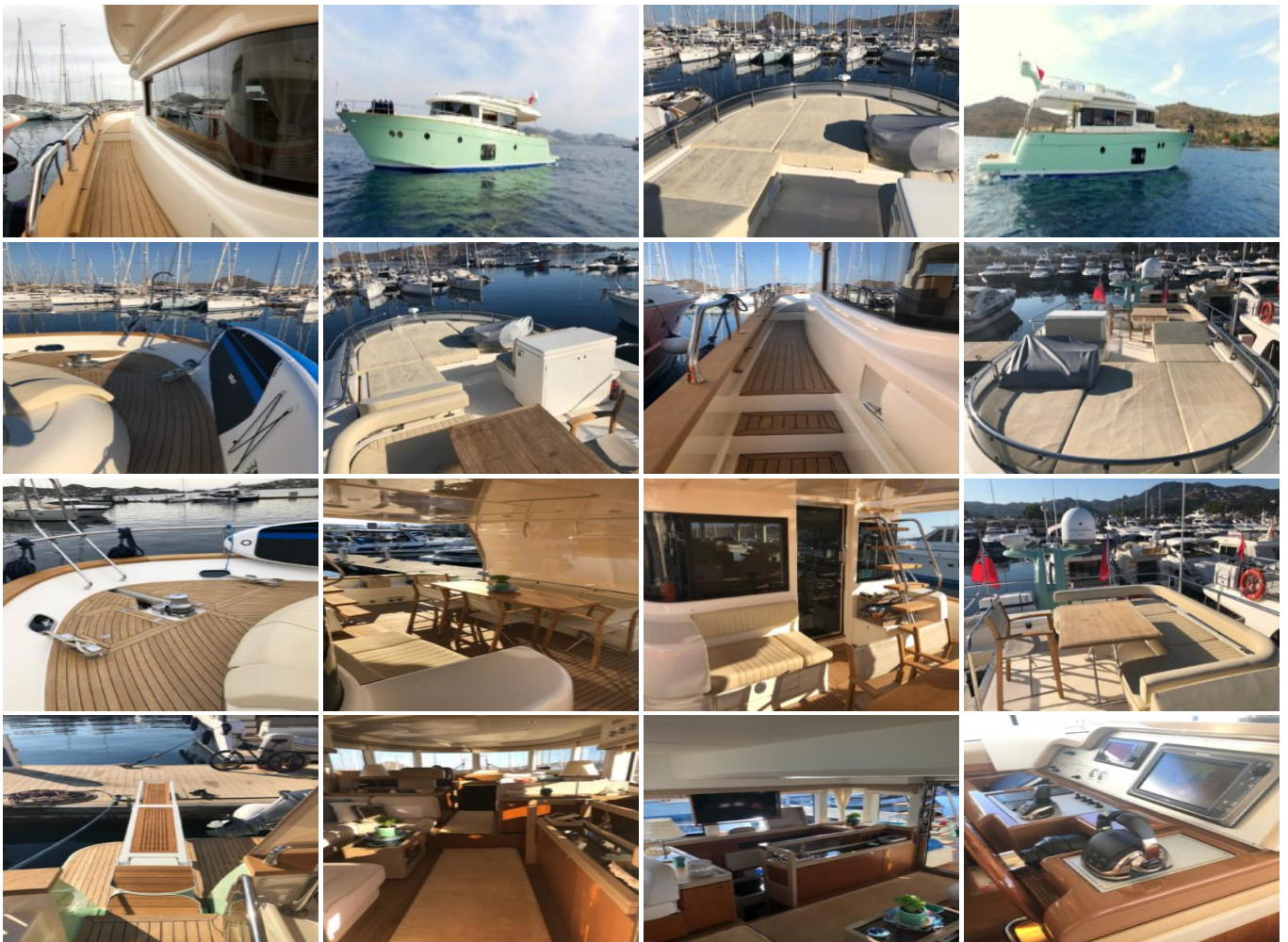
## Apreamare 56 - 2013

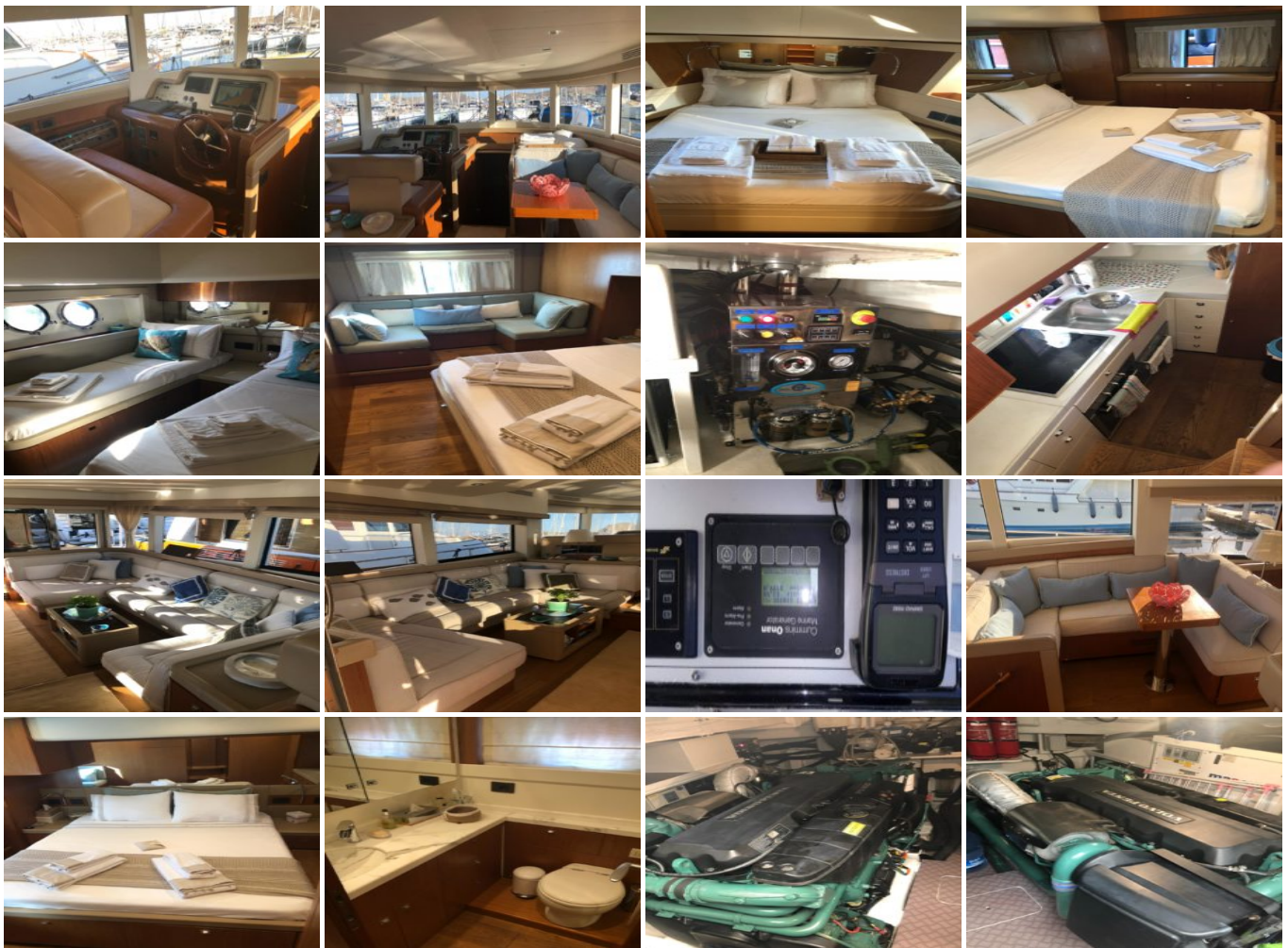
Boat ID: 3952

Date: September 30, 2019

The project of **Maestro 56'**, launched in 2011 in collaboration with the Zuccon International Project for the interior and exterior design and with Marine Design & Service of Umberto Tagliavini for the hull lines and the technical project, was developed at an early stage on the specific desire to find a synthesis between the features and stylistic elements that have historically characterized the Maestro line.

### Gallery





## Specifications & Accommodation

	CATEGORY	ITEM
✓	<b>Brand</b>	Apremare
✓	<b>Model</b>	Maestro 56
✓	<b>Boat type</b>	Motor Yacht
✓	<b>Construction year</b>	2013
✓	<b>LOA Length</b>	15 - 25m
✓	<b>Cruise speed</b>	25
✓	<b>Passengers</b>	6-8
✓	<b>Beam</b>	5,20

	CATEGORY	ITEM
✓	<b>Fuel tank capacity</b>	3300 L
✓	<b>Cabins</b>	3
✓	<b>VAT</b>	NOT PAID
✓	<b>Engine power</b>	2 * VOLVO PENTA IPS2-950 POWER 725MHP / 533 KW AT 2350 G/MIN

## Equipment

	ITEM
✓	<b>1 X Generator Mase 13,5 Kw</b>
✓	<b>Air conditioning Condaria</b>
✓	<b>Watermaker Idromar 120 l/h</b>
✓	<b>Bow thruster</b>
✓	<b>Radar Raymarine</b>
✓	<b>KVH Sat antenna</b>

## General Additional Information

Maestro 56" confirms some of the choices of design and function already used in previous boats: maximum transparency to ensure a close relationship between exterior and interior, the use of vertical windows as connotative element of naval tradition and the choice of both volumes of hull and of the superstructure, which ensure an high degree of comfort.