



## Dominator 68s "GTK" - 2008

Boat ID: 4912

Date: January 8, 2021

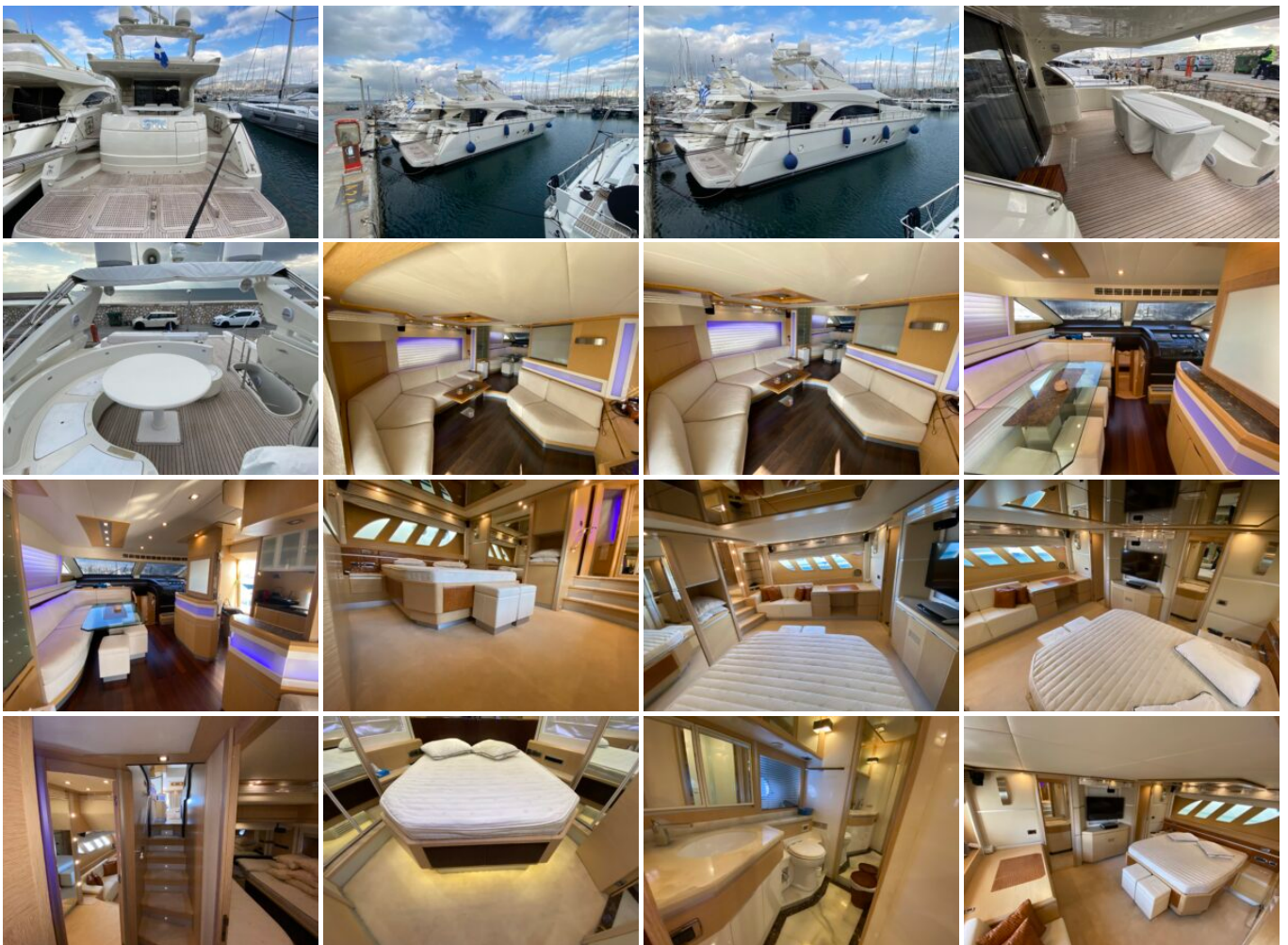
GTK is one of the most modern motor yacht of her category, which attracts with her sport elegance line, her excellent performances and marvelous interior design.

The Dominator 68's accommodates 6 guests in 3 cabins: One Master cabin, One Double cabin and One Twin cabin with separated beds. Each cabin has en suite facilities.

Powered by twin MAN diesel engines of 2,720 hp each, she smoothly cruises at 23 knots.

The yacht has beautiful exterior styling coupled with a chic interior. M/Y Dominator 68's provides fabulous living space on board with large sunbathing.

### Gallery



## Specifications & Accommodation

	CATEGORY	ITEM
✓	<b>Brand</b>	Dominator
✓	<b>Model</b>	68s
✓	<b>Boat type</b>	motor Yacht
✓	<b>Construction year</b>	2008
✓	<b>LOA Length</b>	15 - 25m
✓	<b>Cruise speed</b>	24
✓	<b>Passengers</b>	6-8
✓	<b>Beam</b>	5,50
✓	<b>Fuel tank capacity</b>	5000L
✓	<b>Cabins</b>	3
✓	<b>VAT</b>	Paid
✓	<b>Engine power</b>	2 X MAN 1360Hp

## Equipment

	ITEM
✓	<b>3rd steering station with engines &amp; thrusters controls on aft deck</b>
✓	<b>Toilet system Fresh water TECMA</b>
✓	<b>Underwater Lights4 x White &amp; Blue</b>
✓	<b>TV 50" SAMSUNG in Saloon</b>
✓	<b>Generator: 2 x 17.5 kW Onan</b>
✓	<b>Water Maker: Idromar 80lt./hr</b>
✓	<b>Jet Ski SEADOO GTX Limited 300hp (2020)</b>

	ITEM
✓	<b>GPS Chart Plotter: E120 RAYMARINE</b>
✓	<b>Radar: 48nm E120 display RAYMARINE</b>
✓	<b>Autopilot: AP25 &amp; AP26 on F/B SIMRAD</b>
✓	<b>VHF: 1 x A80289 RAYMARINE &amp; 1 x ICOM IC-M330</b>
✓	<b>Tender Williams 325</b>