



## Ferretti Custom Line 97 - 2008

Boat ID: 3991  
Date: October 1, 2019

The Custom Line 97 is a high volume 5 cabin motor yacht, built to MCA with 3 crew cabins, hard top, large hull windows, a contemporary light wood interior and Mitsubishi Anti Roll Gyro stabilisers.

This boat is a stunning example which has undergone extensive refit with her current owner, including;

service of ARGs, new Simrad navigation equipment, new audio/visual equipment, new galley equipment, interior refurbishment and ceramic polishing. Presented in excellent condition throughout.

### ACCOMMODATION

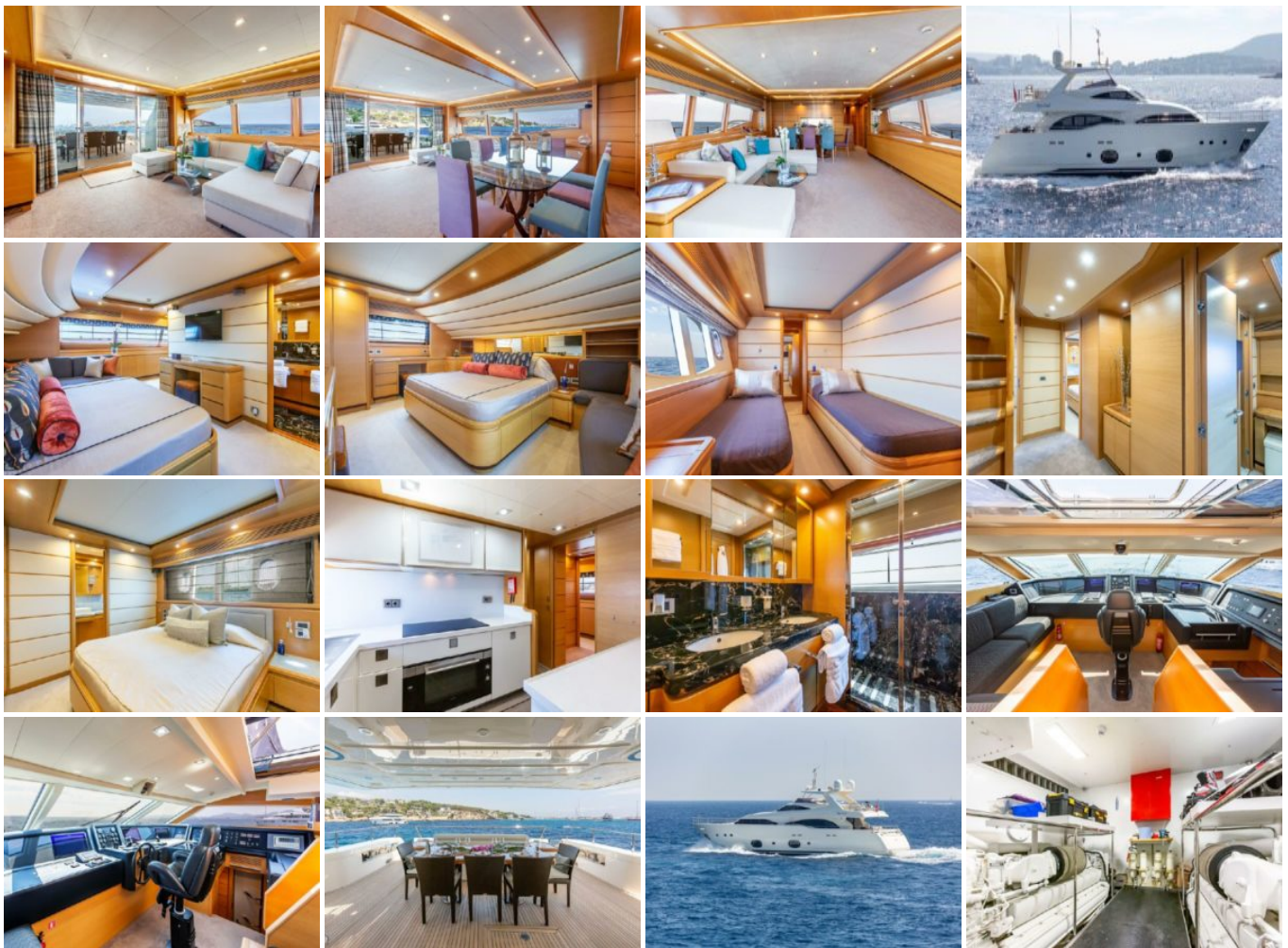
Satin finished oak woodwork throughout with cherry wood in-lays. Light grey upholstery, light grey ceiling panels and brown carpets. All light fittings and switch surrounds are in brushed chrome with polished chrome door handles.

The saloon has a contemporary feel with light flooding in from the large side windows and rear doors, combined with low casual sofas and light, modern coloured fabrics. The dining area can seat up to 10 guests and there is storage all around for crockery, cutlery and glassware.

Going forward on the main deck is the galley to port, then to starboard the access to lower accommodation, side door to deck and the Owner's Cabin continuing forward.

### Gallery





## Specifications & Accommodation

	CATEGORY	ITEM
✓	<b>Brand</b>	Custom Line
✓	<b>Model</b>	97
✓	<b>Boat type</b>	Motor Yacht
✓	<b>Construction year</b>	2008 / Refit 2017
✓	<b>LOA Length</b>	25 - 30m
✓	<b>Cruise speed</b>	24
✓	<b>Passengers</b>	10-12
✓	<b>Beam</b>	7,08

	CATEGORY	ITEM
✓	<b>Cabins</b>	5
✓	<b>VAT</b>	Paid
✓	<b>Engine power</b>	2 x MTU 2400 Hp

## General Additional Information

REFIT 2017

Interior

All furnishings replaced, carpets, blinds, bed covers, mattress, ceiling panels in saloon, sofas, dining table and chairs, coffee tables. We also added Walnut overlay to cabinetry in Saloon and Master Cabin.

The Crew area also had new beds, carpets and sofas.

Bridge

New wood panels on aft bulkhead, all new Simrad Navigation equipment to include all screens and control pads, new Simrad speed and depth equipment and new NAVIOP Screen and CCTV screen. The panels were also replaced with carbon fibre. Lastly a Fusion Stereo system added.

Galley

All new Siemens equipment, all fridges, cooker top, oven, dishwasher. New Corian worktops and glass splash backs. The sink and taps were replaced as was the galley flooring.

Audio Visual

Changed through the whole boat, the Master Cabin and Saloon have 49" 4K tv's with new Bose Surround sound, Sat decoders and Apple tv. The Saloon, Aft deck and Flybridge is controlled by a bespoke iPad control system, this can all be separate music if needed. The AV rack in the Saloon has Apple tv, DVD Bluray player, Xbox, Amp unit with multiple available inputs, and a new Sat decoder. The VIP cabins have new HD tv's, Apple tv and Bose Surround sound, the twin cabins have new tv's with built in Sat decoder, and Apple tv.

Lighting

All the lighting through the boat has been changed to LED, this includes all rope lighting in deck heads and under beds. Exterior lights are stainless steel bezels too. The lighting was all supplied and fitted by Savage Marine Lighting in the UK.

Mechanical

All pumps, and electrical systems refurbished, the engines serviced by MTU every year and Kohler generators by official agents, the generators had new turbos, new exhaust elbows, new injector and pumps.

RINA 5 year survey when purchased, surveyed each year to retain her status of "In Class".

AC Fresh water system had 2 x brand new pumps 220 V, on board water pumps 24 V & 220 V both rebuilt and emergency fire / bilge 24 V & 220 V pumps were both rebuilt.

Emergency and service batteries were changed in refit in 2016.

Whilst every care has been taken in the preparation of these particulars, their correctness is not guaranteed and t

