



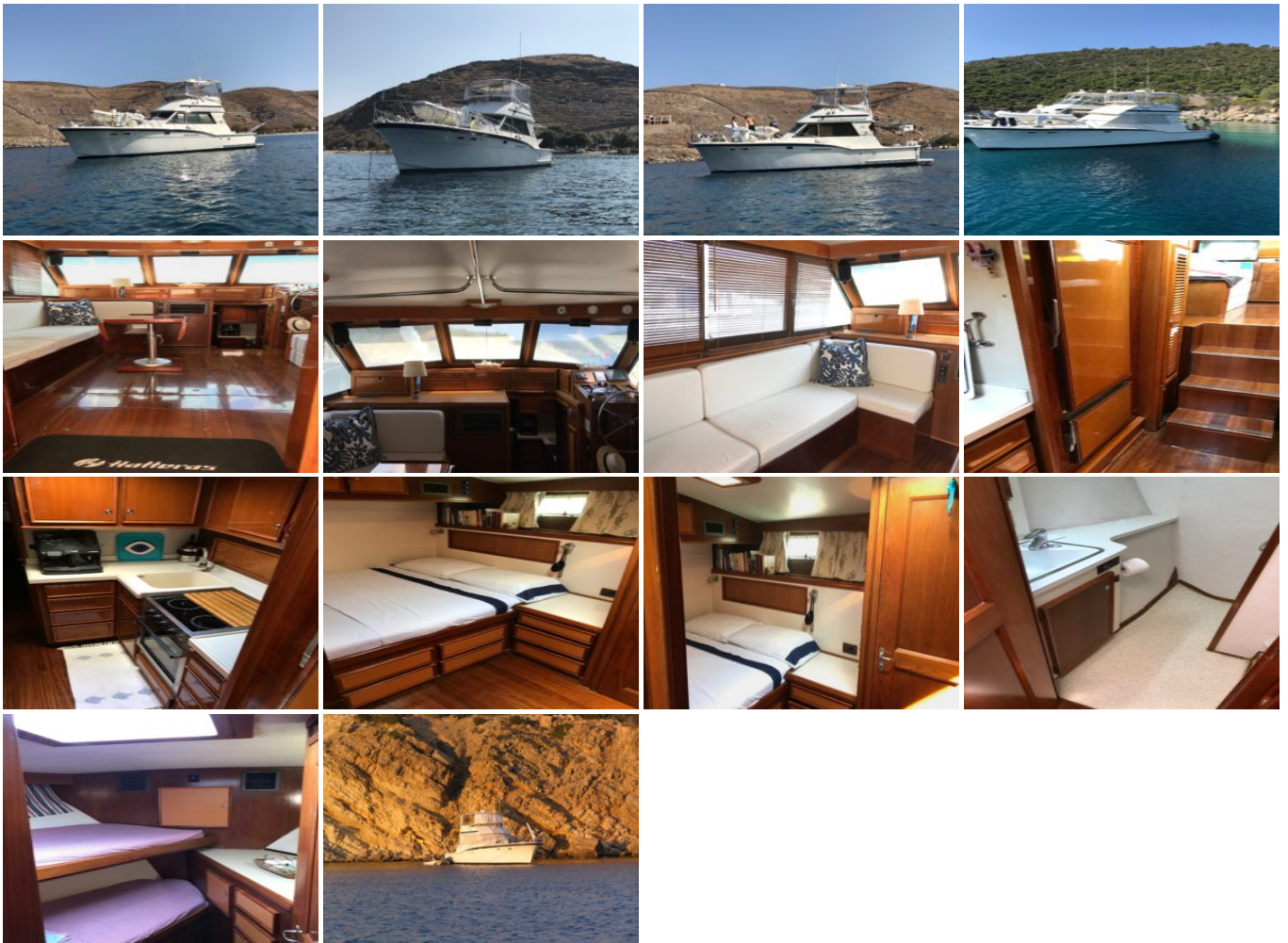
Hatteras 46 - 1979

Boat ID: 4265

Date: December 25, 2019

This particular vessel has been fully equipped and maintained to perfection, with many additional features added by the owners to maximize comfort and ease of use. Her installations range from fine wood work in the saloon, air conditioning, solar panels to a powerful generator. this allows for long duration at sea without the need to come into port. With only 2 months a year in the water her usage has been minimized and condition has been maintained as a result, this shows as she does not look like and boat of 1979.

Gallery



Specifications & Accommodation

| | CATEGORY | ITEM |
|---|---------------------------|---|
| ✓ | Brand | Hatteras |
| ✓ | Model | 46 Convertible |
| ✓ | Boat type | Motor Yacht |
| ✓ | Construction year | 1979 |
| ✓ | LOA Length | Under 15m |
| ✓ | Cruise speed | 19 |
| ✓ | Passengers | 4-6 |
| ✓ | Beam | 4,54 |
| ✓ | Fuel tank capacity | 1750 L |
| ✓ | Cabins | 2 |
| ✓ | Engine power | 2 X Detroit Diesel 550 Hp Year 2001 / Overhauled 2006 |

Equipment

| | ITEM |
|---|---|
| ✓ | Generator Onan 13Hp 2007 / Overhauled 2015 |
| ✓ | Inverter Victron 2014 |
| ✓ | Solar Panels 2 X 120Watts |
| ✓ | Tender Bottom Whaler 13 with Yamaha 30 Hp |
| ✓ | Grey water tank 300 L |
| ✓ | Watermaker 120L |
| ✓ | Aircondition Cruiser |

| | ITEM |
|---|--|
| ✓ | Batteries New 2017 / 5 X 220 Ah for Battery Bank/Service 2017 2 X 200 Ah Battery Bank/Cranking 1 x 100 Ah for Generator |
| ✓ | Water Heater 60L |
| ✓ | One Oven & One Cooker 2009 |
| ✓ | Refrigerator-Freezer professional Frigohart |
| ✓ | GPS/Plotter Geonav |
| ✓ | GPS/Depthsounder Furuno |
| ✓ | Radar Raytheon |
| ✓ | Tv Samsung 32 |
| ✓ | New Gemini Tops and Flying bridge covers |

General Additional Information

Hatteras 46 Convertible

The Hatteras 46 still ranks as the company's most popular vessel, the 46 Convertible was built with the attention to detail that makes every aspect clear and effective. For over 50 years, Hatteras has focused on building vessels with advanced hull designs and construction and optimized weight distribution. Her impeccable design allows for fast dockside service or even fixing problems while at sea.