

Light Holic

Boat ID: 1411
 Date: April 10, 2019

The CRN built LIGHT HOLIC is 196 feet in length and accommodates up to 12 guests in six lovely staterooms. There is a large master suite, 4 additional double cabins and one twin cabin. The elegant salon houses many comfortable sofas and a bar and partitioned from here is the dining room. The clever use of mirrors help reflect the sunlight making her interior bright and light. There are many spacious areas to relax whether sunbathing on the massive upper deck on comfortable lounge chairs or soaking in the Jacuzzi. If feeling more active then work out in the gym or use some of the abundance of sea toys aboard.. She is staffed by a crew of 15.

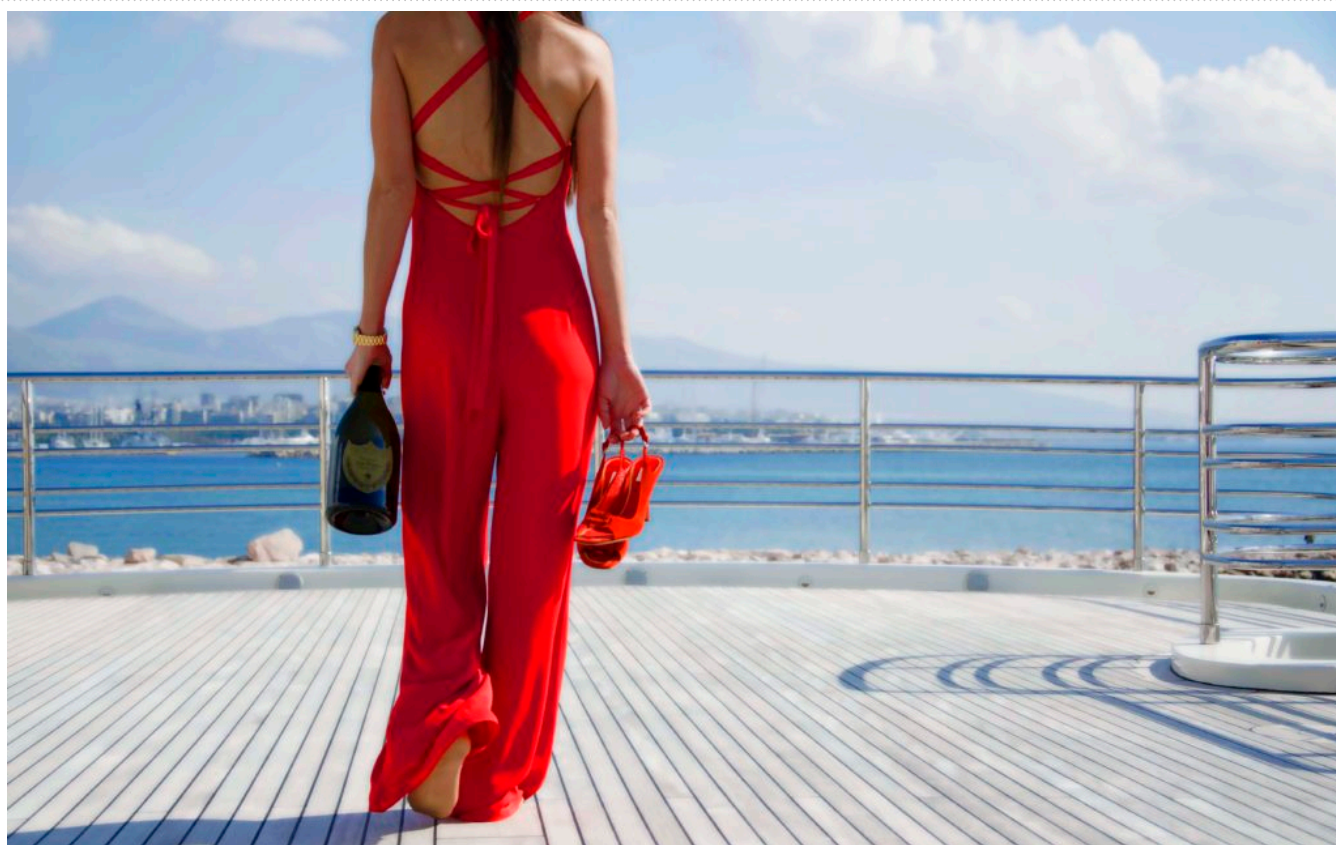
Specifications & Accommodation

	CATEGORY	ITEM
✓	Brand	CRN
✓	Model	Custom
✓	Boat type	Motor Yacht
✓	Construction year	2001
✓	LOA Length	Over 40m
✓	Cruise speed	13 knots/hr
✓	Average fuel consumption	350 ltrs/hr
✓	Passengers	10-12
✓	Cabins	6

Equipment

	ITEM
✓	2 x Castoldi Yanmar with 282 hp
✓	1 x rescue tender with 25 hp Yamaha
✓	2 x Jet Sky Sea Doo 140 hp
✓	2 x powered sea jet blade fish 2000, 12v
✓	1 x tube
✓	1 x inflatable mattress for kids
✓	1 x trampoline
✓	1 x inflatable boat
✓	1 x banana 5 seats

Gallery



















© Attica Yachts 2026. All rights reserved.