



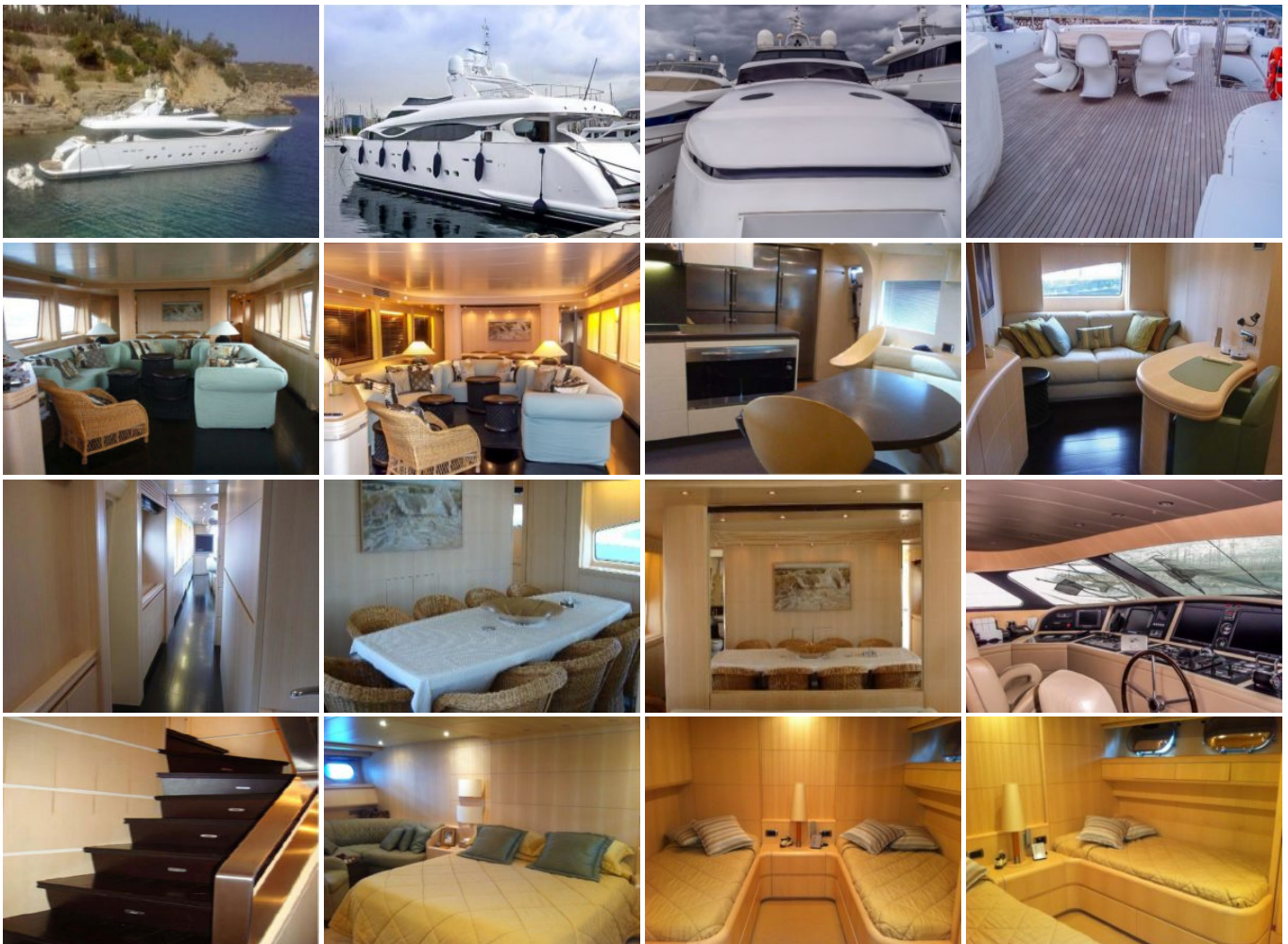
Maiora 38 - 2005

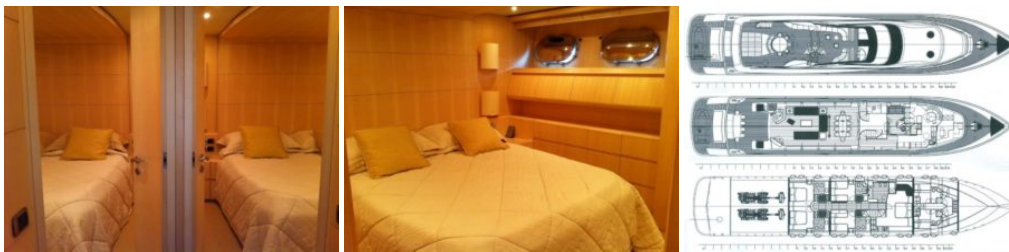
Boat ID: 3781

Date: September 1, 2019

This splendid Maiora 38m is offered in great condition and a viewing is highly recommended. She will cruise at 26 knots and top out at 32 knots. Accommodation is absolutely luxurious and she will sleep 10 guests in 5 cabins and, of course, the crew all have their own accommodation.

Gallery





Specifications & Accommodation

	CATEGORY	ITEM
✓	Brand	Maiora
✓	Model	38
✓	Boat type	Motor Yacht
✓	Construction year	2005
✓	LOA Length	30 - 40m
✓	Cruise speed	20
✓	Passengers	10-12
✓	Beam	7,5m
✓	Fuel tank capacity	32.000 L
✓	Cabins	5
✓	VAT	Paid
✓	Engine power	2 x MTU 1850 Hp

Equipment

	ITEM
✓	Air conditioning - Condaria 200.000 BTU
✓	Watermaker - Idromar 300 l/h
✓	Bow Thruster - Stern Thruster BCS

	ITEM
✓	Generators - 2 x ONAN 40 kw
✓	Teak cockpit, Teak side decks
✓	Tender
✓	Generator 1 x 23,5KW ONAN

General Additional Information

The boat has 11 berths in 5 cabins all with separate Bathroom facilities.

Master suite on lower deck forward with double bed and en-suite bathroom

- Guests´ cabin with double bed on the aft starboard side of the lower deck with en-suite bathroom
- Guests´ cabin with double bed on the aft port side of the lower deck with en-suite bathroom
- Guests´ cabin with Twin single beds + one Pullman berth on the mid strd side of the lower deck with en-suite bathroom
- Guests´ cabin with Twin single beds on the mid port side of the lower deck with en-suite bathroom
- Salon with (U) shaped sitting arrangement and bar
- Dining are next to salon with table for 10 guests
- Study room on main deck
- Galley on main deck forward with crew mess and staircase leading to crew cabins
- Day WC on the port side of the main deck

Crew Quareters.

The Crew have 4 cabins each with 2 berths and the use of 2 bathrooms.

- (4) Crew cabins forward with (2) bunks in each sharing two bathrooms
- Crew mess in galley