



Marine Industrial Technologies 139 - 1992/2017

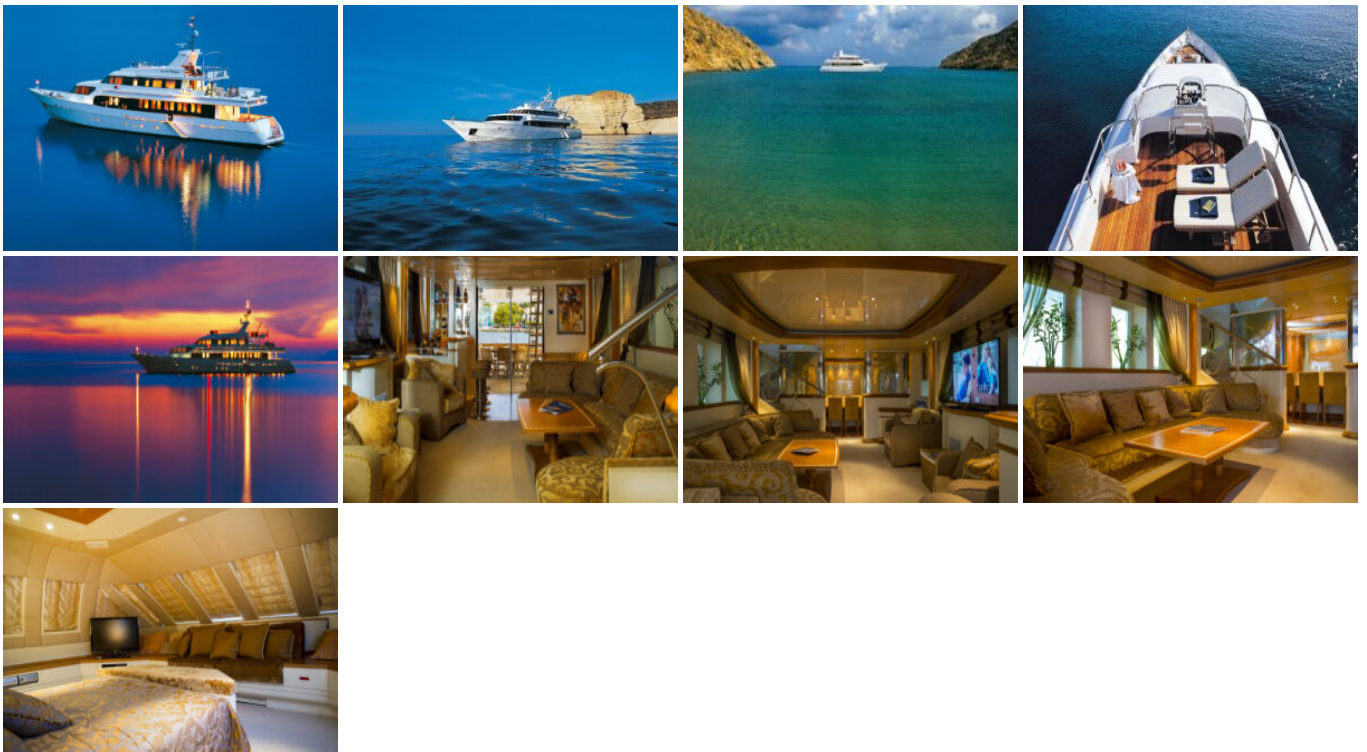
Boat ID: 4958

Date: March 23, 2021

Luxury motor yacht CARMEN FONTANA is a 42m (131,2 ft) superyacht designed and built in Greece. She was completed in late 1992 to the designs of A. Malliris & Associates with exterior styling by L. Poulias and interior design by M. Galanos of ACT. Motor yacht CARMEN FONTANA features a sleek and contemporary exterior design with a lavish yet functional and luxurious interior.

The magnificent interior is impressive and luxurious thanks to the fine details featured with materials such as marble, leather, silk, handmade jewel-coloured Vitra UX-glass, bamboo, wide mirrors and precious work of art by contemporary Greek artists. The salon features predominantly cream and pale brown shades creating a refined and elegant atmosphere. The beautiful inlaid dining table is capable of seating up to ten guests.

Gallery



Specifications & Accommodation

	CATEGORY	ITEM
✓	Brand	Custom
✓	Model	139
✓	Boat type	Motor Yacht
✓	Construction year	1992
✓	LOA Length	Over 40m
✓	Cruise speed	17 knots
✓	Passengers	10-12
✓	Beam	7,40
✓	Fuel tank capacity	31.500 litres
✓	Cabins	5
✓	VAT	Paid
✓	Engine power	2

General Additional Information

REFIT AND ENGINE OVERHAULING : 2017