



Rivarama 44 - 2005

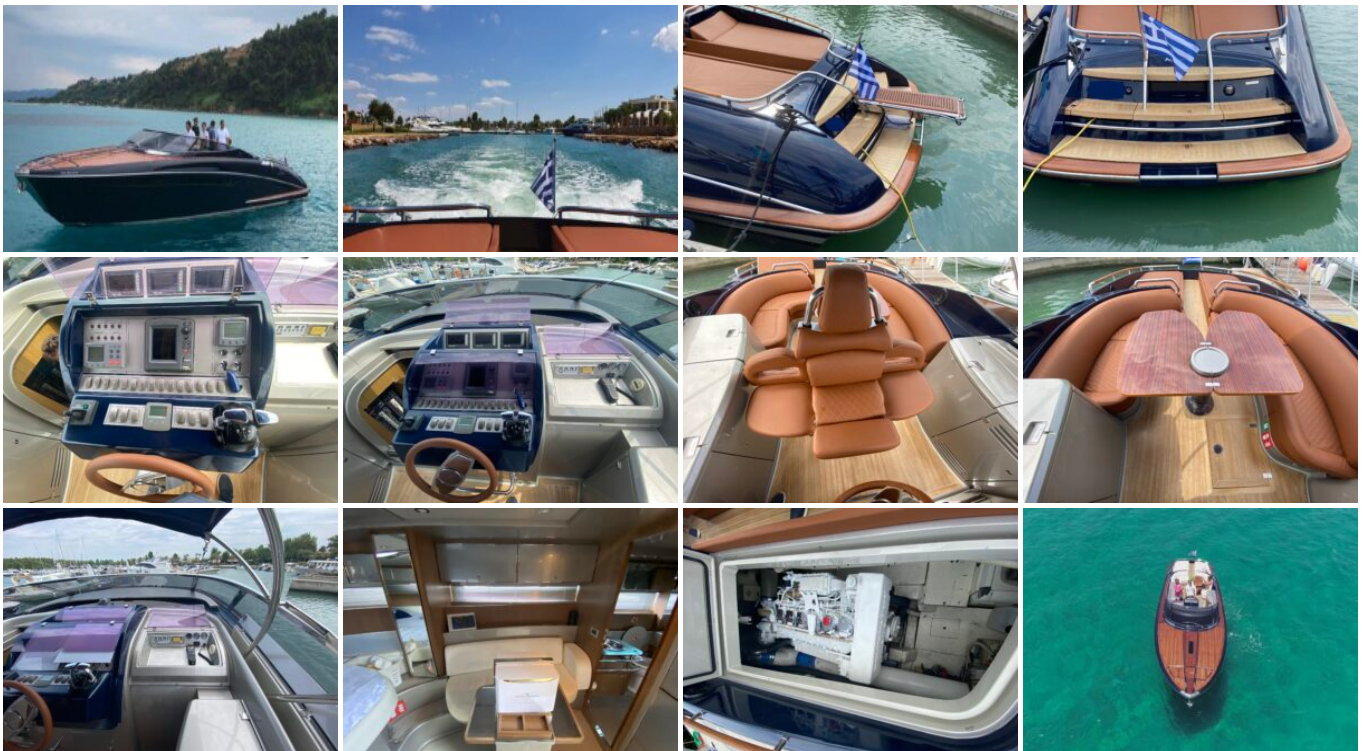
Boat ID: 4739

Date: September 8, 2020

Rivarama's innovative design as a yacht for two with just one master cabin (located in the bow), offers all the comforts of a 5 star hotel, including a unique rapid cooling system for a bottle of champagne and a couple of fluted glasses. Thanks to the use of good materials, the hand-made finishing touches, high liveability and the yacht's performance.

Rivarama is the ideal yacht for even the most demanding owner. She has a deckhand cabin with its own access and private bathroom, making it completely independent. Even the exterior cockpit is equipped with all the necessary accessories to ensure the very best in comfort: an electro-hydraulic bimini provides shade from the sun even when at sea, the folding teak table can seat eight guests and the spacious stern sundeck provides safe, easy access to the water by means of three comfortable steps in non-slip treated mahogany.

Gallery



Specifications & Accommodation

	CATEGORY	ITEM
✓	Brand	Riva
✓	Model	Rivarama 44
✓	Boat type	Motor Yacht
✓	Construction year	2005
✓	LOA Length	Under 15m
✓	Passengers	2-4
✓	Beam	3,88m
✓	Fuel tank capacity	1330L
✓	Cabins	1
✓	VAT	Paid
✓	Engine power	2 x MAN 800Hp