

**PRINCESS V65 2008**



**€750.000**

**SKU:** N/A | **Category:** [For Sale](#) |

**PRODUCT DESCRIPTION**

**AVAILABLE FROM SEPTEMBER 2018**

This PRINCESS V65 is a 21.39m Motor Yacht in excellent condition built in GRP by Princess Yachts in United Kingdom and was delivered in 2008, featuring a deep Vee planing hull and GRP superstructure, with teak laid decks. Powered by twin M.A.N. diesel engines of 1360hp each, she smoothly cruises at 31 knots while is capable to reach a top speed up to 37 knots.

The interior configuration has been designed to comfortably accommodate (6) guests in (3) cabins consisting of a Master cabin full beam amidships, (1) VIP cabin fore and (1) cabin with upper / lower berths, all with en-suite bathrooms. She also, accommodates (1) crew member in (1) cabin with own facilities in separate quarters. The spacious cabins are complimented by large daytime areas both inside and out.

## **SPECIFICATION AND EQUIPMENT**

### **Tanks**

Fresh Water Tanks: (800 Liters) Fuel Tanks: (4400 Liters)

### **Additional Description**

- U-shaped seating/dining area to starboard with folding table and sunbed to port incorporating storage
  - Cockpit lighting
  - Cockpit hood and tonneau cover
    - Stainless steel grabrails
- Electro-hydraulic telescopic passerelle (2.5m) with remotecontrol
  - T tender Zodiac 310 with 20Hp outboard
    - Bow & Stern Thruster
- Cockpit wet bar with sink, ice maker, refrigerator drawer, electric barbecue and storage
- Storage garage for dinghy or wetbike with electro-hydraulic door and electric winch system for retrieval
  - Life raft storage
- Access hatch to large lazarette area with fender storageracks
  - Access hatch to optional crew cabin
    - 220/240v shore support inlet
    - Loudspeakers linked to saloon
    - Bose surround sound system
- Cockpit gate leading to aft deck and to integral bathing platform with hot and cold transom shower, foldaway swimming ladder and teak decking

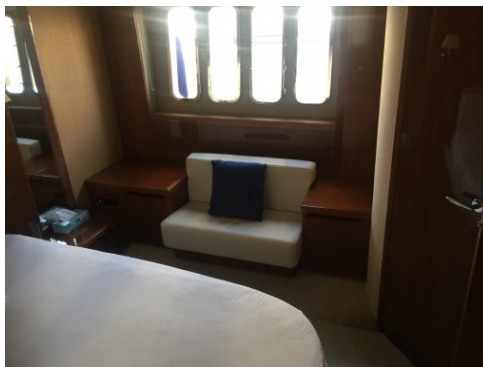
### **Deck Saloon**

- Full air conditioning throughout
- U-shaped sofa with dining table
  - Two seater sofa opposite
- Cocktail unit forward incorporating refrigerator, bottle and glass storage
- Entertainment unit aft incorporating Bose DVD/radio with surround-sound system
  - 32 LCD TV with electric raise/lower mechanism
  - Forward dinette seating area with coffee table
    - Portside electric opening window
- Venetian blinds, curtains or sunscreens (mesh type) to all windows and doors
  - Overhead downlighters
  - Electric hardtop sliding roof
    - Sat Antenna
- Stainless steel framed triple sliding saloon doors

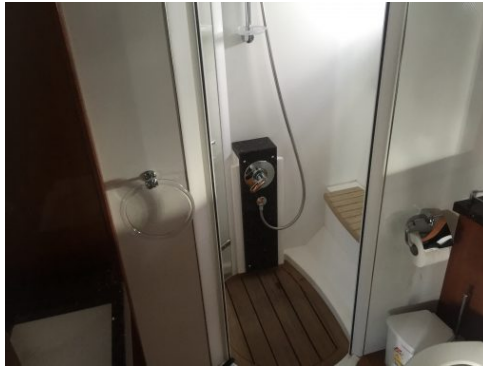
### **Accommodation**

- All cabins feature opening and/or fixed portholes, 240v power points and air conditioning
    - All bathrooms feature opening portholes, fresh water
  - Vacuum flush toilets with holding tanks and 240v shaver points
- Additional Description**
- 24 Volt:**
- 4 x heavy duty batteries for engine starting
  - 6 x heavy duty auxiliary batteries
- 24 Volt:**
- Engine alternators charge via split charging system to isolate engine start batteries from auxiliaries
    - 100 amp 24v float battery charger for auxiliary batteries, 5-amp
      - 24v float battery charger for engine start batteries
    - Remote battery master switches with control switch at main panel
      - Circuit breakers on all circuits
- 220/240 Volt:**
- 22.5kW diesel generator Onan with own starting battery and specially silenced exhaust
    - Generator/shore support changeover system
      - Water maker 180l/h
      - Power points (240v) in:
        - owners stateroom
        - both guest cabins
        - galley (double)
        - saloon
      - Polarity check system
      - Earth leakage safety trip
    - Shaver points in all bathrooms

**GALLERY IMAGES**







### **ADDITIONAL INFORMATION**

<b>VAT</b>	Paid
<b>Location</b>	Greece, Athens
<b>Builder/Model</b>	Princess V65
<b>Built</b>	2008 - Launching: 2009
<b>LOA</b>	21,30m
<b>Cabins</b>	3 + 1 crew
<b>Engines</b>	2 x MAN 1360Hp
<b>Cruising Speed</b>	31 Kn
<b>Engines hours</b>	423
<b>Fuel Consumption</b>	250 Ltrs/Hr
<b>Equipment</b>	GPS Navigation center Depthsounder Compass Autopilot Plotter VHF
<b>Tenders &amp; Water toys</b>	T tender Zodiac 310 with 20Hp outboard
<b>Others</b>	Generator Onan 22,5Kw, Water maker 180l/h, Bow & Stern thruster, Sat Antenna